



AC ABL e
C N N E C T

NAVIGATING THE NEW REALITY

GRADES 1-12

@assumptionsanlorenzo

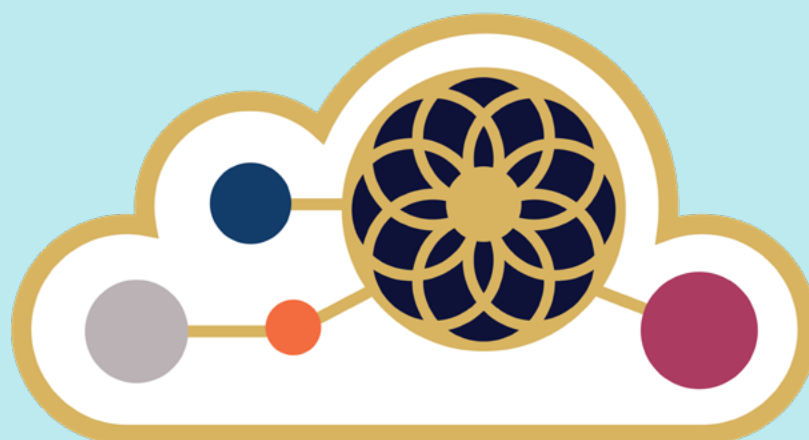
@assumptionsanlorenzo

@Acbed_sanlo

We have been hard at work...

- gathering data and listening to feedback from students, parents, and teachers
- training teachers and staff to deliver effective, engaging online teaching
- putting in place the systems and structures we need to run an optimized online learning experience where students are taught and closely guided by caring teachers

We are excited to give you a glimpse of how we have enhanced the way our students will learn from home in exciting new ways for SY 2020-2021!



AC ABLe C  NNECT

TABLE OF CONTENTS

AC ABLe CONNECT	5
WHAT IS THE AC ONLINE LEARNING FRAMEWORK?	10
IMPORTANT TERMS YOU NEED TO KNOW	13
The AC ABLe CONNECT LEARNING EXPERIENCE	
• What learning platforms will the school use?	14
• What will online classes be like?	14
• What will my daughter's day look like?	15
• What if my daughter can't attend the live classes or consultations?	15
• Grades 1 - 10	16
• Senior High School	17
• What if my daughter can't be online during the school day?	19
• What support will the school provide for us and our daughter/s as we navigate this new world of online learning?	19
• Will we still follow a cyclical schedule?	20
• What is the difference between AC ABLe CONNECT and Homeschooling?	20
• What will my role be in my daughter's online learning?	21
• Will there be opportunities for my daughters to interact virtually with her classmates?	21
• Will we need to print lots of materials?	21
• What equipment will we need?	22
• Will classes be the same size before?	23

TABLE OF CONTENTS

AC ABLe CONNECT IN THE STUDENT LIFE

- When will the students go back to school?
How will their safety be ensured?
What if we don't want our daughter
to go to school physically yet? 24
- Will there still be masses, retreats, and
other activities for Spiritual Formation? 24
- What role will Grade Level Leads and
Class Advisers play in online learning? 25
- Will the school still provide opportunities for students
to exercise social responsibility? 25
- Will Guidance Mentors still be available during online learning? 26
- What about co-curricular and extra-curricular activities? 26
- Will there be opportunities for students
to interact with each other online? 27
- Will the Student Government (SCB-A) still be active? 27
- Will my daughter be required to wear her uniform? 27

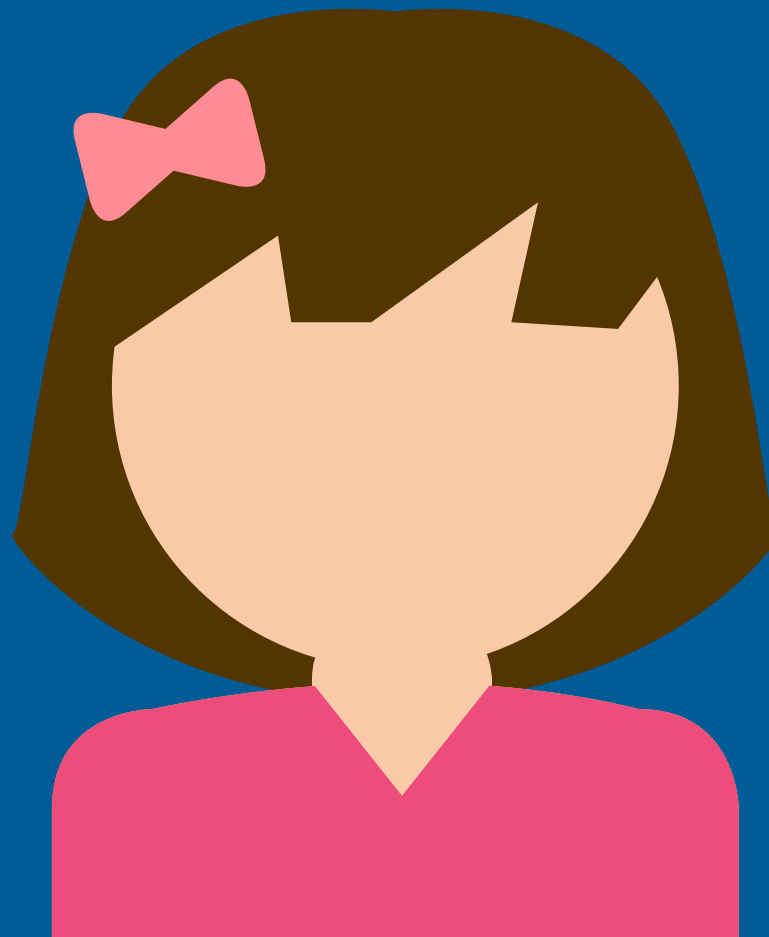
OTHER MATTERS

- Will other school offices such as finance, registrar, etc.
offer online services? 28
- If I choose to home school or transfer my daughter
for a year, can I still enroll her next year? 29
- How can we communicate with the school? 29

BASIC EDUCATION DIVISION

ACADEMIC CALENDAR

30



ABILITIES-BASED EDUCATION

*Developing LIFE Skills to face an
increasingly uncertain world*

Watch this [video](#) to learn more about ABL e.



CHARACTER FORMATION

*Developing a STRONG SENSE OF
IDENTITY, COMPASSION,
and RESILIENCE*



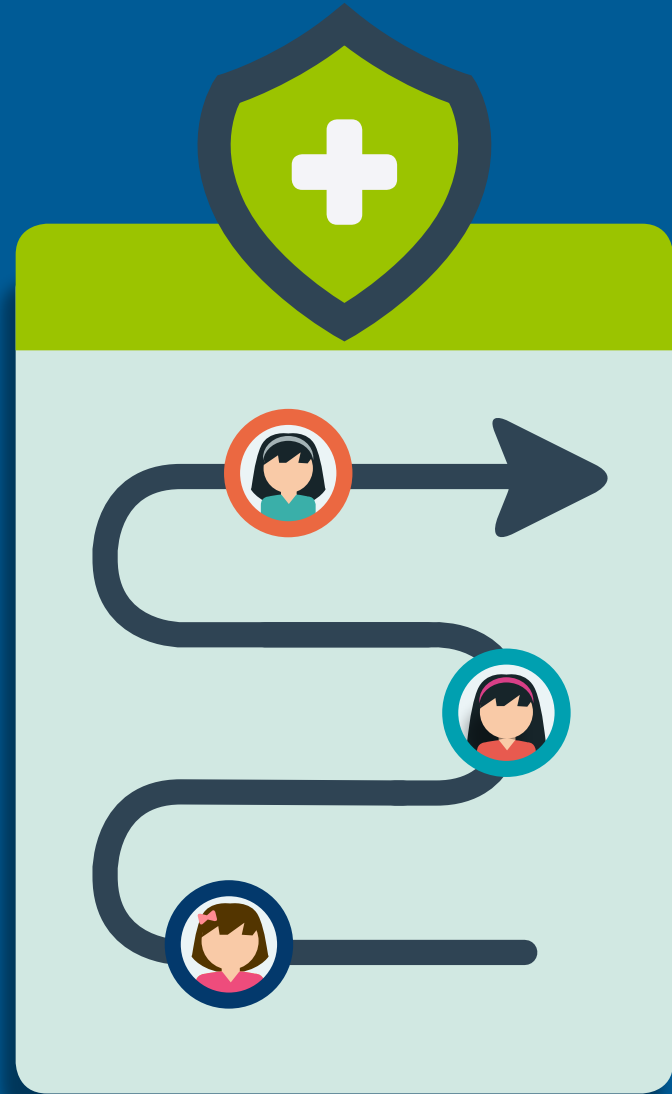
PERSON-ORIENTED ONLINE LEARNING

*Aiming for DEPTH not breadth,
QUALITY not quantity, closely guided by
caring teachers*



STAYING CONNECTED

*Practicing RESPONSIVENESS,
EMPATHY, AND FLEXIBILITY
to meet students' needs*



DYNAMIC AND SAFE LEARNING SPACE

*Loving our times and acting
RESPONSIBLY*

WHAT IS THE AC ONLINE LEARNING FRAMEWORK?

A MODERATED CLASSROOM COMMUNITY



- Daily and weekly classroom schedules to simulate the feel of a class day and facilitate time management and study skills of students.
- The subject teacher providing timely direct instruction and being on call during the designated class and consultation periods.
- Grade Level Leads and Class Advisers monitoring schedules and attending to student concerns

A ROBUST TEACHING-LEARNING AND COMMUNICATION PLATFORM



- Enabling students to be active participants in their learning, making it easy for them to interact and engage in discussions
- Facilitating communication with students and parents, and ease of monitoring progress
- Making it easy for students to follow the flow of the activities of each lesson and ask for the teacher's help

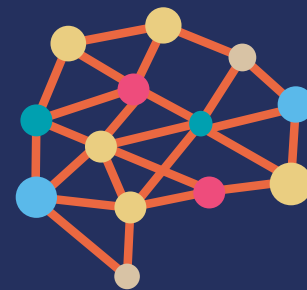
ABILITIES-BASED LEARNING (*ABLe*) ONLINE MODULES

FEATURES:



AIMING FOR MASTERY OF KNOWLEDGE & SKILLS

- Chunking of information into easily-digestible bits followed by opportunities for student practice
- Scaffolding learning for student readiness



DEEPER UNDERSTANDING OF CONCEPTS

- Creating opportunities for students to think actively and uncover complexity
- Making time for reflection on personal, interdisciplinary, and real-world connections



INTERACTIVE LEARNING

- Allowing students to inquire and explore together
- Creating student choice and voice



LEARNING BY “DOING” AND “MAKING”

- Creating opportunities for students to learn critical and creative thinking in real-world and community-based problems and situations
- Ensuring a system for timely feedback with the teacher as coach, so that students know how they are doing

IMPORTANT TERMS YOU NEED TO KNOW

ONLINE LEARNING

- teachers and students are in different locations
- conducted via the internet
- methods of delivery may employ different technologies such as learning management systems, applications and video conferencing software

BLENDED LEARNING

- "any formal education program where a student learns online at least some of the time" (retrieved from <https://news.elearninginside.com/what-parents-need-to-know-about-blended-learning/>)
- this means that students may do some of their learning online from home, and some of their learning on campus together with other students and a teacher.

FACE-TO-FACE LEARNING

- involves regular in-person meetings between teachers and students for the delivery of course content and learning materials

LEARNING MANAGEMENT SYSTEM (LMS)

- software that enables schools to communicate with stakeholders (students, parents, teachers and administration), create and manage lessons, deliver instructional materials, administer assessments and monitor student progress

LEARNING PLATFORM

- an integrated set of interactive online services that provides the teachers, learners, parents and others involved in education with information, tools and resources to support and enhance educational delivery and management.

SYNCHRONOUS LEARNING

- "refers to a form of education, learning or instruction in which the student learns from the instructor in real time but not necessarily in person or in the same place" (retrieved from <https://www.techopedia.com/definition/23794/synchronous-learning>)

ASYNCHRONOUS LEARNING

- "a student-centered teaching technique in which online learning resources are used to enable information sharing between people in a network. In asynchronous learning, information sharing is not limited by place or time" (retrieved from <https://www.techopedia.com/definition/23154/asynchronous-learning>)

THE AC ABLe CONNECT

LEARNING EXPERIENCE

WHAT LEARNING PLATFORMS WILL THE SCHOOL USE?



Grades 1-12 will use a Learning Management System (LMS) called Schoology. This platform is well-suited for long-term online learning and contains many features that are not found in Google Classroom. It has an extremely user-friendly interface and allows for learning materials to be conveniently organized. It also enables students to track their schedules on a calendar, monitor their submitted assessments, and use built-in discussion and assessment tools. You may wish to view this [video](#) in which an elementary student explains how she uses Schoology.



We will also continue using GSuite for Education for its productivity tools such as Google docs, Google forms, Jamboard, etc. GSuite and Schoology are compatible with each other.



Because Preschool has fewer subjects and a simpler curriculum, they will continue using Google Classroom.

WHAT WILL ONLINE CLASSES BE LIKE?

A combination of **synchronous** and **asynchronous** methods will be used for instruction. Learning activities will take place via the following in all subjects.

Synchronous methods

- Live classes through video conferencing platforms, with provisions to make recordings available to students who cannot attend

Asynchronous methods

- Teacher-made screencasts and videos
- Independent work time
- Consultations, check-ins

WHAT WILL MY DAUGHTER'S DAY LOOK LIKE?

For Grades 1-12:

In the morning...

- Get started! Begin the day with live **Morning Talk** as a class with various teachers and other members of the school community. Classes will start at a later time than face-to-face classes.
- There will be up to **3 academic periods** each morning
- These periods will be used for either live instruction or guided work (which may be done online or offline). For guided work, teachers will still be available online to answer questions during their period.
- There will be brain breaks in between periods.

In the afternoon...

There will be:

- a non-academic subject (Gr. 1-10)/ one academic subject (SHS) and/or
- independent work time/ academic check-in/ consultation time with teachers and/or
- formation time (check-ins with Class Adviser or Guidance Mentor/ spiritual formation/ wellness time)

WHAT IF MY DAUGHTER CAN'T ATTEND LIVE CLASSES OR CONSULTATIONS?

We understand that students may not always be able to attend their live classes, especially if they are sharing a device with other family members, or if their internet connection is weak or unstable. In such instances, **accommodations** will be made so that they can keep up with their lessons at their own pace. For example, recordings of live classes may be made available to them.

You will be informed about how you can field questions to the teacher about the subject matter beyond the designated class time.



In general, periods will be an hour (Grades 1-10) or 70 minutes (SHS). These longer periods will allow the teacher, when needed, to give **focused attention** to smaller groups of students. For example, the teacher can spend time with 4 smaller groups for 15 minutes each within the period.

GRADES 1 - 10

In Grades 1-10, we have systematically identified content and skills to prioritize and master because they are needed for subsequent grade levels, are necessary across disciplines, or are life skills.

Students will have three periods a week for Mathematics, Science, English, and Filipino, and two for Social Studies. In some levels, there may be an additional period for literacy, Mathematics and/or Science. They will have one period a week for Christian Living Education (CLE), and one period a week for 1-2 non-academic subjects per quarter. These may include Art, Music, Technology and Livelihood Education and Computer, depending on the grade level. There are also several weekly periods set aside for independent work time, consultations, and academic check-ins with teachers. Finally, there is at least one period dedicated to character and spiritual formation, wellness, and guidance.

SAMPLE SCHEDULES

(These are subject to minor changes; final class schedules will be given before classes begin)

GRADE 1 and 2					
	DAY 1	DAY 2	DAY 3	DAY 4	DAY 5
8:15 - 8:45	Morning talk/send-off for the day				
8:45 - 9:45	PE	English	Math	English	Math
9:45 - 10:00	B R E A K [stand up and take a walk, rest your eyes, eat]				
10:00 - 11:00	Filipino	SS	English	Filipino	Filipino
11:00 - 12:00	Math	Independent work time/Consultation	SS	Independent work time/Consultation	CLE
12:00 - 1:00	B R E A K [eat, take a walk, rest your eyes]				
1:00 - 2:00	Independent work time/ Consultation	Character and Spiritual Formation / Wellness / Guidance	Independent work time/ Consultation	Art/Music	Independent work time/ Consultation

*Periods are one hour long, but activities will only be planned for roughly 40-45 minutes so that students can have a **brain break**.*

GRADE 3 to 10					
	DAY 1	DAY 2	DAY 3	DAY 4	DAY 5
8:15 - 8:45	Morning talk/send-off for the day				
8:45 - 9:45	Math	SS	Math	SS	Math
9:45 - 10:00	B R E A K [stand up and take a walk, rest your eyes, eat]				
10:00 - 10:55	English	English	Filipino	Filipino	English
11:00 - 12:00	Science	Filipino	Science	Additional STEM period for some grade levels	Science
12:00 - 1:15	B R E A K [eat, take a walk, rest your eyes]				
1:15 - 2:15	PE	Independent work time/ Consultation	CLE	Art/Music/TLE/ Computer	Independent work time/ Consultation
2:15 - 3:15	Independent work time/ Consultation	Character & Spiritual Formation	Independent work time/ Consultation	Character & Spiritual Formation	Independent work time/ Consultation

Periods are one hour long, but activities will only be planned for roughly 40-45 minutes so that students can have a **brain break**.

SENIOR HIGH SCHOOL

A. Semestral Format: Back-to-back Modular

Since there are more subjects in the Senior High School (SHS), we will adopt a back-to-back, modular scheme to ensure the workload will be manageable for students. The semester will consist of two modules of forty two (42) days each. Each module will focus on a maximum of five (5) subjects. At the end of the first 42-day module, students will take the other three to five subjects required by the curriculum. Christian Living Education Classes will not follow the back-to-back modular scheme and will be taken throughout the semester. Please see the examples below:

SAMPLE SCHEDULES

1. GRADE 11 HUMSS	
Module 1 Subjects (42 days)	Module 2 Subjects (42 days)
Filipino 1	Reading and Writing Skills
Earth & Life Science	English for Academic and Professional Purposes
Philippine Politics and Governance	General Math
CLE: Personality Development	Understanding Culture, Society and Politics

SAMPLE SCHEDULES

2. GRADE 12 STEM	
Module 1 Subjects (42 days)	Module 2 Subjects (42 days)
General Physics 1	General Chemistry 2
Filipino 3	Research in Daily Life 2
General Biology 1	Disaster Reduction and Risk Management
Assumption College Experience (ACx)	CLE: Philosophy of the Human Person
CLE: Philosophy of the Human Person	

B. Daily Class Schedule

The class periods in SHS will be one (1) hour and ten (10) minutes long. All subjects, except Christian Living Education (CLE), will have three (3) meetings per week. CLE will have two (2) meetings per week.

(SAMPLE SCHEDULE)					
Time	Monday	Tuesday	Wednesday	Thursday	Friday
8:15 - 8:45	Morning Talk				
9:00 - 10:10	Subject 1				
10:10-11:00	Digital Recess (may be used for check-in, self-care, physical fitness, feedbacking/consultation, eye rest)				
11:00 - 12:10	Subject 2				
12:10 - 1:50	Lunch (may be used for check-in, self-care, physical fitness, feedbacking/consultation, co-curricular activities, masses etc.)				
1:50- 3:00	Subject 3				

WHAT IF MY DAUGHTER CAN'T BE ONLINE DURING THE SCHOOL DAY?

We are designing AC ABLe CONNECT to be structured enough for you to build a stable routine for your daughter/s, but **flexible** enough to accommodate various home situations. We understand that students may sometimes be unable to work at the designated time. It is important that you communicate with us. We will provide forms that will allow you to tell us about such conditions so that we can make accommodations for you and your daughter/s.

WHAT SUPPORT WILL THE SCHOOL PROVIDE FOR US AND OUR DAUGHTER/S AS WE NAVIGATE THIS NEW WORLD OF ONLINE LEARNING?

- **Orientations** will be given to students, parents, and other caregivers at the beginning of the year. These will cover not only **tutorials** for using our platforms and apps, but also **guidelines** for topics such as behaving and interacting with others online, being a good member of an online community, guidelines for being a successful online learner, and tips for supporting your daughter in her online learning.
- **More targeted orientations** will also be given throughout the year to explain, for example, a new app or task for an upcoming unit
- **Tutorial videos** will be made available throughout the year.
- Our **Helpdesk** will be on call during office hours to provide you with assistance.

WILL WE STILL FOLLOW A CYCLICAL SCHEDULE?

Grades 1-10 will follow a **5-day cyclical schedule**. Preschool and Senior High School will follow a **fixed daily schedule** rather than a cyclical one.

WHAT IS THE DIFFERENCE BETWEEN AC ABLE CONNECT AND HOMESCHOOLING?

After considering student, parent, and teacher feedback about 2019-2020's Learning from Home system, we have made major enhancements to our delivery of online learning. A key feature of AC ABLe CONNECT is a more **active live teacher presence**. Teachers will guide your daughters through the material for the week, provide **live instruction** and/or **videos and screencasts** in all subjects, and regularly be available for consultation to ensure that students have ample time to ask their teachers questions.

We are designing AC ABLe CONNECT so that **teachers provide robust instruction** while **parents play a supporting role**. We will have **tech practice sessions** at the start of the year with **students, parents, and other caregivers** so that the children will be able to navigate the online learning space on their own or with minimal assistance. **Teachers** will also establish **routines for work time**, provide ample **live and/or recorded instructions for tasks**, and **guide students as they work during the school day**.

This is in contrast to **homeschooling** which requires that the parent takes primary responsibility for their child's learning. This means that parents will be the ones to look for and implement a developmentally-appropriate, DepEd-compliant curriculum, select instructional materials, design lessons, deliver instruction, monitor student progress and behavior, give feedback regarding academic performance and administer assessments among other tasks.

WHAT WILL MY ROLE BE IN MY DAUGHTER'S ONLINE LEARNING?

Your guidance and support will still be crucial for your daughter's success in learning online. For example, we will need your assistance creating a conducive space for her to work, and helping her to establish a routine and remain focused during the school day. Younger students will need additional assistance with tasks such as accessing materials and classes, completing work that was not finished during class time, and reviewing their lessons.

We will provide **more detailed tips for parents during the orientation at the start of the year.**

WILL THERE BE OPPORTUNITIES FOR MY DAUGHTER TO VIRTUALLY INTERACT WITH HER CLASSMATES?

AC ABLe CONNECT gives importance to "Allowing students to inquire and explore together." Thus, synchronous activities will provide opportunities for students to interact with each other and learn collaboratively.

WILL WE NEED TO PRINT LOTS OF MATERIALS?

We will **maximize apps** that enable students to answer their work online. When materials do need to be printed, **hard copies will be made available for pick-up as an option.** These may be picked up by courier as arranged by parents.

WHAT EQUIPMENT WILL WE NEED?

To maximize the online learning experience, it would be ideal for each student to have a **computer** (laptop/desktop) or **tablet** with camera and **internet access**, and reasonably-priced, wired **earphones/headphones** with a built-in **microphone**.

The minimum computer specifications required to run the AC ABLe CONNECT platform and apps are:

- i5, i7 or a9 processor (i3 processors may also be used but may run more slowly)
- 4-8 gb RAM
- 64-bit BUS (Windows)
- 512 gb (Windows) or 128 SSD (Mac) hard drive
- webcam

The minimum tablet specifications required to run the AC ABLe CONNECT platform and apps are:

- ver 6.0 or higher (Android) or ios 11.0 or higher (Mac)
- 1.8 ghz or higher
- 3 gb RAM
- minimum 128 mb memory (please note that this memory capacity will likely require a dongle to transfer files)
- wifi access
- webcam
- Bluetooth capability
- Microsoft Word or Google Docs (Gr. 4 and up)
- Microsoft PowerPoint or Google Slides (Gr. 4 and up)
- keyboard for tablet (Gr. 5 and up)

However, **special arrangements** may be made for students who are sharing devices with family members, whose computers do not meet these specifications, who have an unstable/weak internet connection at home, etc. **There is no need to buy a new computer or laptop.**

WILL CLASSES BE THE SAME SIZE AS BEFORE?

The school took measures to reduce class sizes in school years 2017-2018 and 2018-2019. However, we are **further reducing class sizes** for online learning in **Gr. 1-12**.

Preschool class sizes will **remain the same** because these levels have always had a much smaller student-teacher ratio than the higher grades.

During live sessions, classes may sometimes be further **subdivided** to provide students with more focused attention, or **combined** to give students common activities or teacher-led instruction.

Aside from reducing class sizes, we have also lessened the total number of students that each teacher handles so that they can better monitor the progress of each learner.

A C A B L e C O N N E C T

I N S T U D E N T L I F E

WHEN WILL THE STUDENTS GO BACK TO SCHOOL? HOW WILL THEIR SAFETY BE ENSURED? WHAT IF WE DON'T WANT OUR DAUGHTER TO GO TO SCHOOL PHYSICALLY YET?

For school year 2020-2021, we plan to continue **100% online learning for at least the first two quarters/first semester**, and we are prepared to run the entire year fully online if necessary.

We continue to monitor the national and global situation. If and when it becomes safe to do so in the second semester, we may shift to **blended learning** (a combination of online and face-to-face learning). In such a scenario, we will follow stringent health protocols and strict social distancing guidelines. Students may come to school in small batches on alternate days, following staggered schedules. However, **attendance in on-campus activities will be optional.**

WILL THERE STILL BE MASSES, RETREATS, AND OTHER ACTIVITIES FOR SPIRITUAL FORMATION?

Spiritual formation is one of the three pillars of Assumption education and therefore a non-negotiable feature of school life. Aside from the daily Morning Talks, we will continue having **online masses, recollections/ retreats, and other liturgical celebrations and observances.**

WHAT ROLE WILL GRADE LEVEL LEADS AND CLASS ADVISERS PLAY IN ONLINE LEARNING?

An important feature of Assumption transformative education is that all teachers pay loving attention to their students' character formation. However, Grade Level Lead and the Class Advisers play a **special role in student formation**.

Each grade level has a **Grade Level Lead (GLL)** who will coordinate and monitor all level matters for the grade level. The GLL also liaises with parents regarding level matters and provides student orientations when necessary.

The GLL will work closely with two **Class Advisers** per level (Gr. 1-10) and one Class Adviser per section (SHS). These Class Advisers will:

- conduct **regular check-ins** with students individually or in small groups to help them set goals, track their progress, and care for their personal well-being
- work hand in hand with the subject teachers to follow up students regarding academic matters

WILL THE SCHOOL STILL PROVIDE OPPORTUNITIES FOR STUDENTS TO EXERCISE SOCIAL RESPONSIBILITY?

Social responsibility is another pillar and non-negotiable element of Assumption education. We will continue to organize **Concrete Acts for Social Transformation (CAST)** that can be carried out **even while students are at home**. We will also encourage student voice and choice and provide guidance and **support for student-initiated efforts**.

WILL GUIDANCE MENTORS STILL BE AVAILABLE DURING ONLINE LEARNING?

Guidance Mentors (GMs) will play a **proactive role** in caring for the students, especially their mental health and wellbeing. They will be available online for emotional support, and are trained to provide psychological first aid when necessary. Under AC ABLe CONNECT, our **virtual guidance program** will continue to provide the following:

- Online Consultation Services (OCS) for individuals and groups
- Routine interview
- Guidance/homeroom classes that will cover topics such as mental wellness activities that families can do at home, internet safety and responsible digital citizenship

WHAT ABOUT CO-CURRICULAR AND EXTRA-CURRICULAR ACTIVITIES?

The school recognizes the importance of ensuring holistic formation and cultivating the **gifts and talents of each child**. Thus, it will provide opportunities for students to express themselves and pursue their interests and passions.

In the **SHS**, time for **co-curricular activities** and organizations will be integrated in your daughter's weekly schedule.

From **Gr. 3-12**, some **optional extra-curricular activities** shall be made available after school hours with a separate fee.

WILL THERE BE OPPORTUNITIES FOR STUDENTS TO INTERACT WITH EACH OTHER ONLINE?

"Staying Connected" is a central feature of AC ABLe CONNECT. Thus, aside from academic classes, there will also be formation check-ins, and co-curricular and extra-curricular activities where students can collaborate and build relationships with each other virtually.

WILL THE STUDENT GOVERNMENT (THE STUDENT CENTRAL BOARD OF THE ASSUMPTION OR SCB-A) STILL BE ACTIVE?

The SCB-A will continue to be a vital part of the school community that molds **strong women leaders** and strengthens the Prime Life Ability of leadership. This is true not only for officers, but for the entire student body which is given the opportunity to participate in a variety of SCB-A-initiated activities. The SCB-A will continue animating assemblies, raising awareness and rallying their peers to support specific causes, and proposing special projects for the school community.

WILL MY DAUGHTER BE REQUIRED TO WEAR HER UNIFORM?

A **dress code** will be provided for students. **Wearing the school uniform will be optional** because not all students may have uniforms for school year 2020-2021.

OTHER MATTERS

WILL OTHER SCHOOL OFFICES SUCH AS FINANCE, REGISTRAR, ETC. OFFER ONLINE SERVICES?

The following services are currently available online:

A. Online Admissions Application

Online applications may be accessed at www.assumption.edu.ph. Click on the Basic Education tab and choose Admissions from the pull-down menu.

B. Registrar's Office at <https://portal.assumption.edu.ph>

- Report Card (by June 8, 2020)
- Enrolment (June 10, 2020 onwards)
- Request for credentials (June 16, 2020 onwards) For new students/parents, a step by step guide will be sent to you on how to navigate the students portal.

C. The Finance Office currently offers the following online payment options:

	Old Students	New Students
BPI: 1811-0005-54		X
BPI: 1811-0007-16 Metrobank: 642-3-64207754-7	✓	✓
GCash transfer to:	✓	✓
Union Bank: 101720009530 Account Name: ASSUMPTION COLLEGE, INC.	✓	✓

Please email proof of payment to the Finance Office at finance@assumption.edu.ph or gchavez@assumption.edu.ph.

Beginning **June 10, 2020**, payments **online via credit card** will be available as well.

Further details about the **AC Campus Online** will follow soon.

IF I CHOOSE TO HOMESCHOOL OR TRANSFER MY DAUGHTER FOR A YEAR, CAN I STILL ENROLL HER NEXT YEAR?

Students will need to undergo the application and admissions process again if they choose not to enroll this coming school year. Their placement will depend on the number of available slots and the results of their entrance test.

HOW CAN WE COMMUNICATE WITH THE SCHOOL?

We are presently operating with a skeletal staff as well as updating our escalation protocol for AC ABLe CONNECT. While this is under development, you may contact us at the **AC BED Hotline (09167849018)** or at the BED Helpdesk at **acbedhelpdesk@assumption.edu.ph**.

You may expect further details about **AC ABLe CONNECT** and the **AC Campus Online** in the **PARENT ORIENTATIONS** which will be held from **July 20 to August 4, 2020**.

Details on the tuition and fees will be available on the 2nd week of June.

BASIC EDUCATION DIVISION ACADEMIC CALENDAR

School Year 2020-2021

**Dates are subject to change.*

***We are currently finalizing our policy on Online Assessments. Should there be Quarterly Exams, these are the dates we foresee.*

PRESCHOOL TO GRADE 10

July 20 – August 4	Summer Bridging Sessions (SBS) & Orientation Sessions for Students & Parents (specific dates & time per level - TBA)
August 5 – 10	Brain-break/online recollections/accompaniment/class encounters
August 11, 2020	Start of Regular Classes
August 11 - October 9, 2020	1st Quarter
October 7 – 9, 2020	Quarterly Exam**
October 12 – 14, 2020	Brain break/online recollections/
October 15 – December 16, 2020	2nd Quarter
December 11 – 15, 2020	Quarterly Exam**
October 29 – November 2, 2020	Sem Break
December 16, 2020	Online Christmas celebration
December 17, 2020 – January 3,	Christmas Break
January 4 – March 3, 2021	3rd Quarter
March 1 – 3, 2021	Quarterly Exam**
March 4 – 5, 2021	Brain break/online recollections/ accompaniment/ class encounters
March 8 – May 7, 2021	4th Quarter
May 5 -7, 2021	Quarterly Exam**
March 31 – April 4, 2021	Holy Week Break (Holy Wednesday to Good Friday)

BASIC EDUCATION DIVISION ACADEMIC CALENDAR

School Year 2020-2021

**Dates are subject to change.*

SENIOR HIGH SCHOOL

July 20 – August 4	Summer Bridging Sessions (SBS) & Orientation Sessions for Students & Parents (specific dates & time per level - TBA)
August 5 – 10	Brain-break/online recollections/ accompaniment/ class encounters
1st Semester	
August 11 – October 13, 2020	Module 1
October 14, 2020	Brain Break
October 15 – December 17, 2020	Module 2
October 29 – November 2, 2020	SEM BREAK
December 18, 2020	Online Christmas Celebration
December 19, 2020 – January 3, 2021	Christmas Break
2nd Semester	
January 4 – March 3, 2021	Module 1
March 4, 2021	Brain Break
March 5 - May 6, 2021	Module 2
*March 31 – April 4, 2021	Holy Week Break (Holy Wed to Good Friday)
May 22, 2021	Graduation for Batch 2020
May 21, 2021	Graduation for Batch 2021



AC ABLe
C O N N E C T

