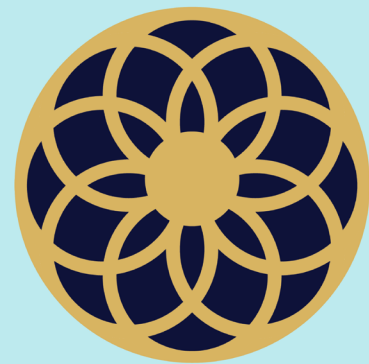




**CALLED
TO LEAD**



AC ABL e
C O N N E C T

**NAVIGATING THE
NEW REALITY**

COLLEGE
SY 2021-2022



@ACSanLorenzoPHOfficial



@assumptionsanlorenzo



@acinstitutional



AssumptionCollegeInstitutional

We have been hard at work...

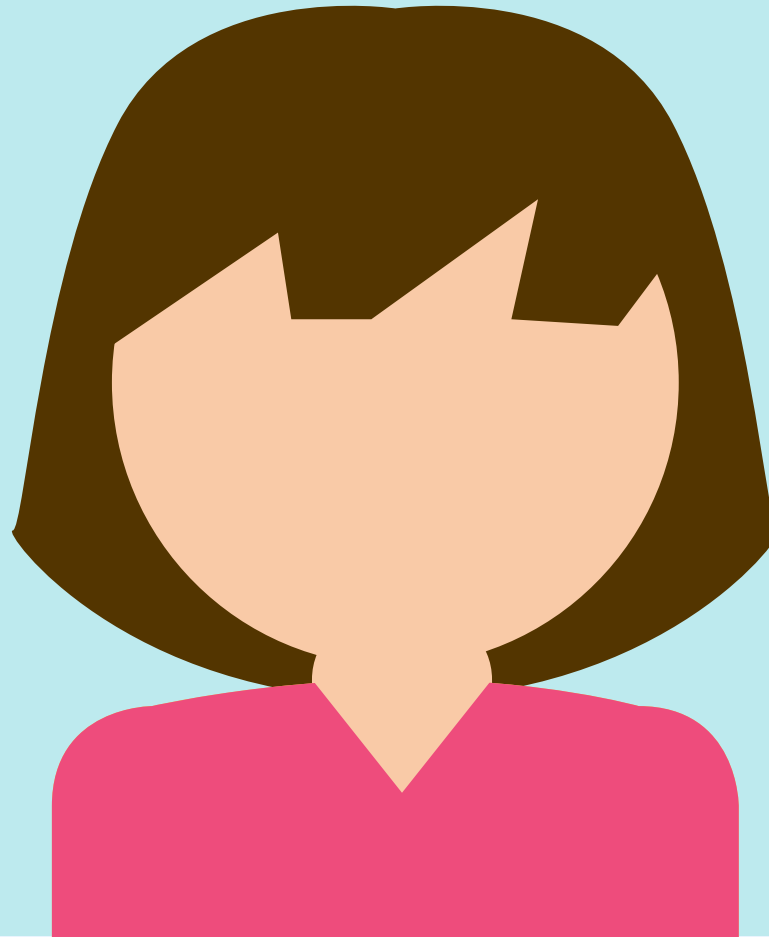
- gathering data and listening to feedback from students, parents, and teachers
- training teachers and staff to deliver effective, engaging online teaching
- putting in place the systems and structures we need to run an optimized online learning experience where students are taught and closely guided by caring teachers

We are excited to give you a glimpse of how we have enhanced the way our students will learn from home in exciting new ways for School Year 2021-2022!



TABLE OF CONTENTS

AC ABLe CONNECT	4
ABILITY-BASED LEARNING ONLINE MODULES	9
IMPORTANT TERMS YOU NEED TO KNOW	10
The AC ABLe CONNECT LEARNING EXPERIENCE	
• What learning platforms will the school use?	12
• What will online learning look like?	12
• What if students cannot attend live classes or consultations?	13
• What if a student cannot be online during school days?	13
• What support will the school provide for the students as we transition to this new world of online learning?	13
AC ABLe CONNECT IN THE STUDENT LIFE	
• When will the students go back to school?	14
• Will there still be masses, recollections, and activities for Spiritual Formation?	14
• Will Guidance Mentors still be available during online learning?	15
• Will there be opportunities for students to interact with each other online?	15
• Will the Assumption Student Council (ASC) still be active?	15
OTHER MATTERS	
• Will other school offices such as Finance, Registrar, etc. offer online services?	16
• How can we communicate with the school?	16
HED- AC ABLe CONNECT PRIMER DIRECTORY	17
HIGHER EDUCATION DIVISION ACADEMIC CALENDAR	18



ABILITY-BASED EDUCATION

*Developing LIFE Skills to face an
increasingly uncertain world*

Watch this [VIDEO](#) to learn more about ABL e.



AC ABL e
CONNECT



Called To Lead



CHARACTER FORMATION

*Developing a STRONG SENSE OF
IDENTITY, COMPASSION,
and RESILIENCE*



AC ABL e
CONNECT



Called To Lead



PERSON-ORIENTED ONLINE LEARNING

*Aiming for DEPTH not breadth,
QUALITY not quantity, closely guided by
caring teachers*



STAYING CONNECTED

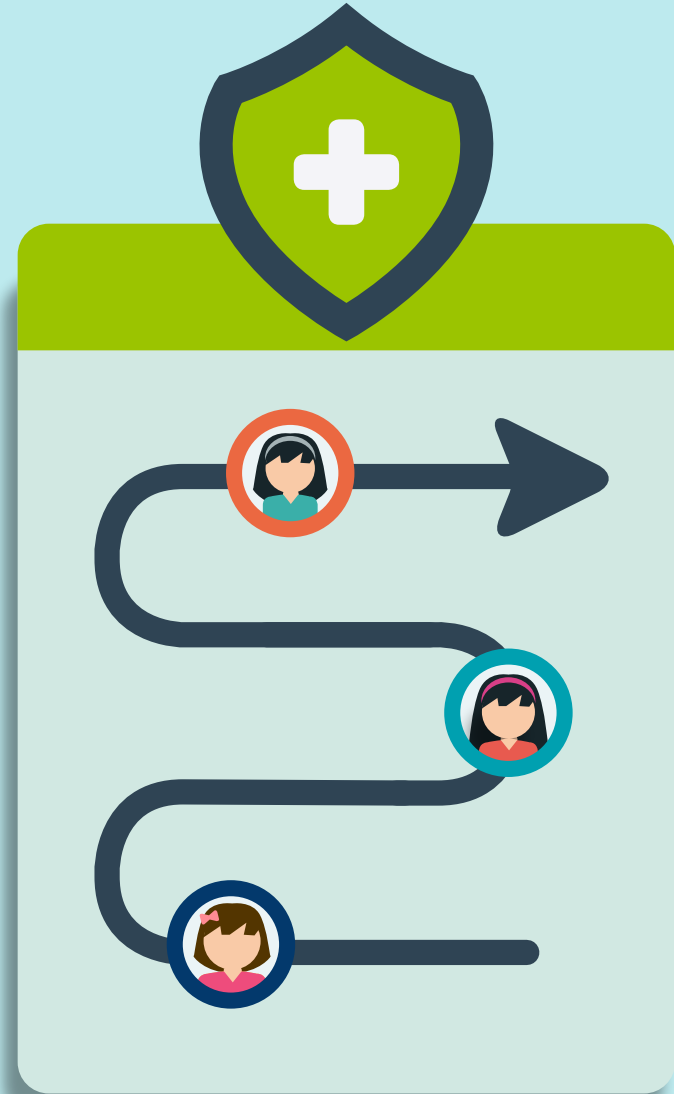
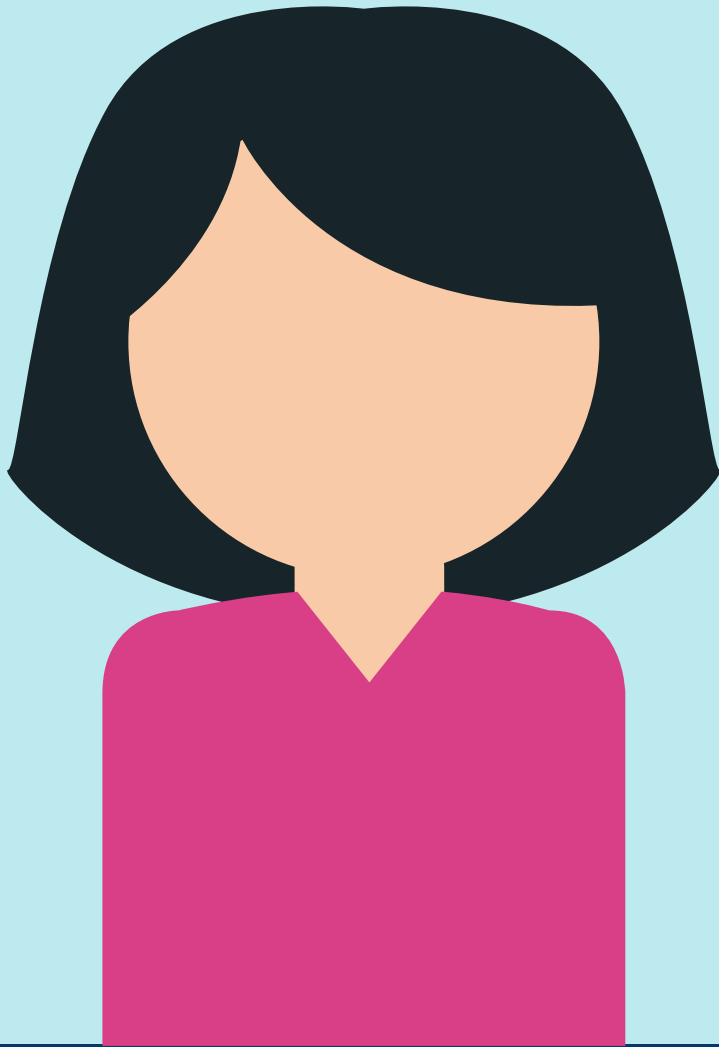
*Practicing RESPONSIVENESS,
EMPATHY, AND FLEXIBILITY
to meet students' needs*



AC ABL e
CONNECT



Called To Lead



DYNAMIC AND SAFE LEARNING SPACE

*Loving our times and acting
RESPONSIBLY*

ABILITY-BASED LEARNING (*ABLe*) ONLINE MODULES



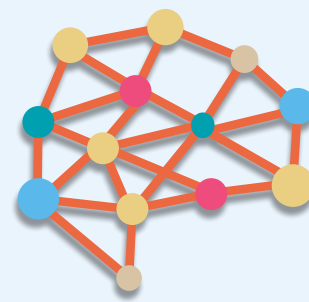
AIMING FOR MASTERY OF KNOWLEDGE & SKILLS

- Chunking of information into easily-digestible bits followed by opportunities for student practice
- Scaffolding learning for student readiness



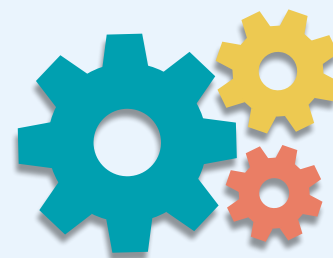
INTERACTIVE LEARNING

- Allowing students to inquire and explore together
- Creating student choice and voice



DEEPER UNDERSTANDING OF CONCEPTS

- Creating opportunities for students to think actively and uncover complexity
- Making time for reflection on personal, interdisciplinary, and real-world connections



LEARNING BY “DOING” AND “MAKING”

- Creating opportunities for students to learn critical and creative thinking in real-world and community-based problems and situations
- Ensuring a system for timely feedback with the teacher as coach, so that students know how they are doing

IMPORTANT TERMS YOU NEED TO KNOW

ONLINE LEARNING

- teachers and students are in different locations
- conducted via the internet
- methods of delivery may employ different technologies such as learning management systems, applications and video conferencing software

BLENDED LEARNING

- "any formal education program where a student learns online at least some of the time" (retrieved from <https://news.elearninginside.com/what-parents-need-to-know-about-blended-learning/>)
- this means that students may do some of their learning online from home, and some of their learning on campus together with other students and a teacher.

FACE-TO-FACE LEARNING

- involves regular in-person meetings between teachers and students for the delivery of course content and learning materials

LEARNING MANAGEMENT SYSTEM (LMS)

- software that enables schools to communicate with stakeholders (students, parents, teachers and administration), create and manage lessons, deliver instructional materials, administer assessments and monitor student progress

LEARNING PLATFORM

- an integrated set of interactive online services that provides the teachers, learners, parents and others involved in education with information, tools and resources to support and enhance educational delivery and management.

SYNCHRONOUS LEARNING

- "refers to a form of education, learning or instruction in which the student learns from the instructor in real time but not necessarily in person or in the same place" (retrieved from <https://www.techopedia.com/definition/23794/synchronous-learning>)

ASYNCHRONOUS LEARNING

- "a student-centered teaching technique in which online learning resources are used to enable information sharing between people in a network. In asynchronous learning, information sharing is not limited by place or time" (retrieved from <https://www.techopedia.com/definition/23154/asynchronous-learning>)



1

SCHEDULE

Each quarter = 9 weeks*
3 to 4 subjects per quarter

1st Quarter

August 9 to October 9

2nd Quarter

October 18 to December 18

3rd Quarter

January 10 to March 12

4th Quarter

March 21 to May 28

***general**

5

AC ABL e CONNECT

ESSENTIALS

SY 2021 - 2022

2

COURSE DESIGN

MODULAR:

1 subject = 4 modules
1 module = 12 hours

ABILITY-BASED:

- Be real-world ready

3

COURSE DELIVERY

Class Schedule: 1 subject (3 unit course) = 6-hour session per week
Online Learning Platform: GSuite for Education

ASYNCHRONOUS

- most of the course content to be given through:
 - learning resources
 - pre-recorded lectures
 - instruction and actual demonstrations of professors
- access online, anytime
- study at your own pace while being mindful of set deadlines

SYNCHRONOUS

- regular time slots for guided instruction, consultations with professors
- accommodations and considerations for students with connectivity issues

PERSONALIZED SUPPORT SYSTEM

- strong support system by your Professors, Program Chairs, Guidance Mentors

4

COURSE ASSESSMENT

FORMATIVE

- non-graded practice drills
- Professor's feedback
- peer and self-assessment

SUMMATIVE

- end of unit performance tasks
- graded learning outputs

PERFORMANCE-BASED

- tasks that allow you to apply your knowledge and abilities in real-world contexts

****GRADING SYSTEM - as indicated in the Student Handbook**

5

LEARNING RESOURCES

- Online modules / Printed modules available for pick up and courier delivery
- Open Educational Resources
- Pre-recorded lectures, demonstrations and other instructional media resources
- Assumption College E-library resources

THE AC ABLe CONNECT

LEARNING EXPERIENCE

WHAT LEARNING PLATFORMS WILL THE SCHOOL USE?



College students will continue using the Google Workspace for Education Fundamentals.

This platform is well-suited for long-term online learning and contains many features that encourage collaboration and creativity. It has an extremely user-friendly interface and allows for learning materials to be conveniently organized. It also enables students to track their schedules on a calendar, monitor their submitted assessments, and use built-in discussion and assessment tools.

We will also continue using Google Workspace for its productivity tools such as Google docs, Google forms, Jamboard, etc.

WHAT WILL ONLINE CLASSES BE LIKE?

A combination of **synchronous** and **asynchronous** methods will be used for instruction. Learning activities will take place via the following in all subjects.

Synchronous methods

- Regular time slots for guided instruction
- Consultations and feedbacking to ensure adequate support for students' learning
- Accommodations and considerations for students with connectivity issues.

Asynchronous methods

- Most of the course content to be delivered through
 - learning resources
 - pre-recorded lectures
 - instruction and actual demonstrations of professors
 - interactive tasks
- Can be easily accessed online
- With provision for independent work time for outputs that can be completed off line.

WHAT IF STUDENTS CANNOT ATTEND LIVE CLASSES OR CONSULTATIONS?

We understand that students may not always be able to attend their live classes, especially if they are sharing a device with other family members, or if their internet connection is weak or unstable. In such instances, **accommodations** will be made so that they can keep up with their lessons at their own pace. For example, recordings of live classes may be made available to them.

WHAT IF A STUDENT CANNOT BE ONLINE DURING THE SCHOOL DAY?

AC ABLe CONNECT is designed to provide structured learning, yet it is flexible to **accommodate** various home situations. We understand that students may sometimes be unable to work at the designated time. It is important that you communicate with professors.

WHAT SUPPORT WILL THE SCHOOL PROVIDE FOR THE STUDENT AS WE TRANSITION TO THIS NEW WORLD OF ONLINE LEARNING?

- **Orientations** will be given to students at the beginning of the year. These will cover not only tutorials for using our platforms and apps, but also guidelines for topics such as behaving and interacting with others online, being good member of an online community, and guidelines for being a successful online learner.
- **Tutorial videos** will be made available throughout the year.
- For any assistance, comments, and feedback achelpdesk@assumption.edu.ph

A C A B L e C O N N E C T

I N S T U D E N T L I F E

WHEN WILL THE STUDENTS GO BACK TO SCHOOL?

For school year 2021-2022, we will continue to provide **100% online learning**.

We monitor the national and global situation. If and when it becomes safe to do so, we may shift to blended learning (a combination of online and face-to-face learning). In such scenario, we will follow stringent health protocols and strict social distancing guidelines. Students may come to school in small batches on alternate days, following staggered schedules. However, **attendance in on-campus activities will be optional**.

WILL THERE STILL BE MASSES, RECOLLECTIONS, AND OTHER ACTIVITIES FOR SPIRITUAL FORMATION?

Spiritual formation is one of the three pillars of Assumption education and therefore a non-negotiable feature of school life. We will continue having **online masses, recollections, and retreats, and other liturgical celebrations and observances**.



WILL GUIDANCE MENTORS STILL BE AVAILABLE DURING ONLINE LEARNING?

Guidance Mentors (GMs) will play a **proactive role** in caring for the students, especially their mental health and wellbeing. They will be available online for emotional support, and are trained to provide psychological first aid when necessary. Under AC ABLe CONNECT, our **virtual guidance program** will continue to provide the following:

- Online Consultation Services (OCS) for individuals and groups
- Routine interview
- Guidance webinars that will cover topics such as mental wellness activities that families can do at home, internet safety, and responsible digital citizenship

WILL THERE BE OPPORTUNITIES FOR STUDENTS TO INTERACT WITH EACH OTHER ONLINE?

"Staying Connected" is a central feature of AC ABLe CONNECT. Thus, aside from academic classes, there will also be formation check-ins, and co-curricular and extra-curricular activities where students can collaborate and build relationships with each other virtually.

WILL THE ASSUMPTION STUDENT COUNCIL (ASC) STILL BE ACTIVE?

The Assumption Student Council (ASC) will continue to be a vital part of the school community that molds **strong women leaders** and strengthens the Prime Life Ability of leadership. This is true not only for officers, but for the entire student body which is given the opportunity to participate in a variety of ASC initiated activities.

The ASC will continue animating assemblies, raising awareness and rallying their peers to support specific causes, and proposing special projects for the school community.

OTHER MATTERS

WE'RE HAPPY TO OFFER OUR ONLINE SERVICES

A. Online Admissions Application



Inquire Now!



Apply Now!

B. Registrar's Office

- *1st Semester Enrollment August 2, 2021 onwards
- * 2nd Semester Enrollment January, 2022

Portal: <https://portal.assumption.edu.ph>

C. The Finance Office currently offers the following online payment options:

	Old Students	New Students
BPI: 1811-0005-54		X
BPI: 1811-0007-16 Metrobank: 642-3-64207754-7	✓	✓
GCash transfer to:	✓	✓
Union Bank: 101720009530 Account Name: ASSUMP- TION COLLEGE, INC.	✓	✓

Please email proof of payment to the Finance Office at finance@assumption.edu.ph or gchavez@assumption.edu.ph.

WE LOVE TO HEAR FROM YOU

HED - AC ABLe CONNECT PRIMER DIRECTORY



Admissions1



Admissions2



Business & Accountancy



CMAR



College Dean



Communication/Performing Arts



Education/Graduate School



Faith & Spirituality



Finance



Gen. Education/Theology



Guidance1



Guidance2



Interior Design



Library



Records1



Records2



Psychology



Scholarship



Student Affairs

HIGHER EDUCATION ACADEMIC CALENDAR

School Year 2021-2022

QUARTERLY ACADEMIC SCHEME

- Each semester is divided into two (2) quarters
- Each quarter is composed of 9 weeks
- Each quarter covers three (3) to four (4) subjects
- Each subject is equivalent to a 6-hour session per week

TIME FRAME	FIRST SEMESTER	SECOND SEMESTER	SUMMER
Enrollment	Aug 2-6, 2021	Jan 5-7, 2022	June 6-10, 2022
Start of Classess	Aug 9,2021	January 10, 2022	June 13, 2022
	First Quarter	Third Quarter	
Week 1	August 9-14, 2021	January 10-15, 2022	June 13-18, 2022
Week 2	August 16-21, 2021	January 17-22, 2022	June 20-25, 2022
Week 3	August 23-28, 2021	January 24-29, 2022	June 17-July 2, 2022
Week 4	August 30-Sept. 4, 2021	January 31-Feb. 5, 2022	July 4-9, 2022
Week 5	Sept. 6-11, 2021	February 7-12, 2022	July 11-16, 2022
Week 6	Sept. 13-18, 2021	February 14-19, 2022	July 18-23, 2022 (Final Exams)
Week 7	Sept. 20-25, 2021	February 21-26, 2022	
Week 8	Sept. 27- Oct. 2, 2021	Feb. 28- March 5, 2022	
Week 9 Final Exam	Oct. 4-9, 2021	March 7-12, 2022	
Quarter Break	Oct. 11-16, 2021	March 14-19, 2022	
	Second Quarter	Fourth Quarter	
Week 1	Oct. 18-23, 2021	March 21-26, 2022	
Week 2	Oct. 25 - Oct. 30, 2021	March 28-April 2,2022	
Week 3	Nov. 2-4, 2021	April 4-8, 2022	
Week 4	Nov. 8-13, 2021	April 11-13,2022* (Holy Week)	
Week 5	Nov. 15-20, 2021	April 18-23, 2022	
Week 6	Nov. 22-27, 2021	April 25-30, 2022	
Week 7	Nov. 29 - Dec. 4, 2021	May 2-7, 2022	
Week 8	Dec. 6-11, 2021	May 9-14, 2022	
Week 9 Final Exam	Dec. 13-18, 2021	May 16-21, 2022 (Final Exams for Graduating Students)	
Week 10		May 23-28, 2022 (Final Exams for Undergraduates)	
Sem Break	Dec. 19 - Jan. 2, 2022	June 24, 2022	Graduation



Called To Lead



AC ABLe
C O N N E C T

@ACSanLorenzoPHOfficial



@assumptionsanlorenzo



@acinstitutional



AssumptionCollegeInstitutional

