

AC ABL e
C O N N E C T

NAVIGATING THE
NEW REALITY

PRESCHOOL



@assumptionsanlorenzo



@assumptionsanlorenzo

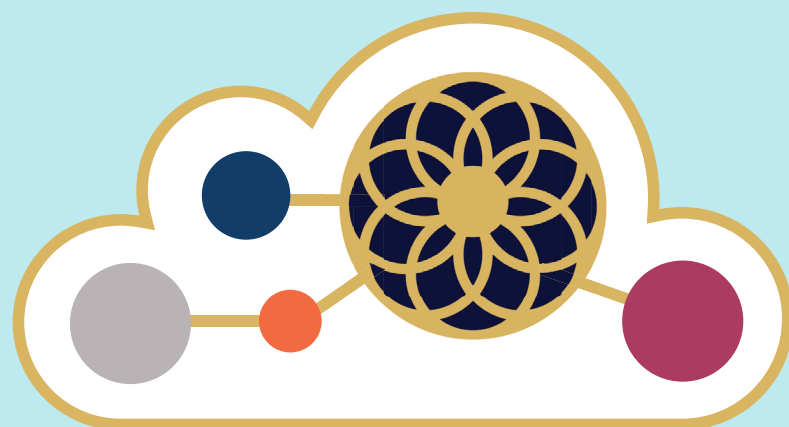


@Acbed_sanlo

We have been hard at work...

- gathering data and listening to feedback from students, parents, and teachers
- training teachers and staff to deliver effective, engaging online teaching
- putting in place the systems and structures we need to run an optimized online learning experience where students are taught and closely guided by caring teachers

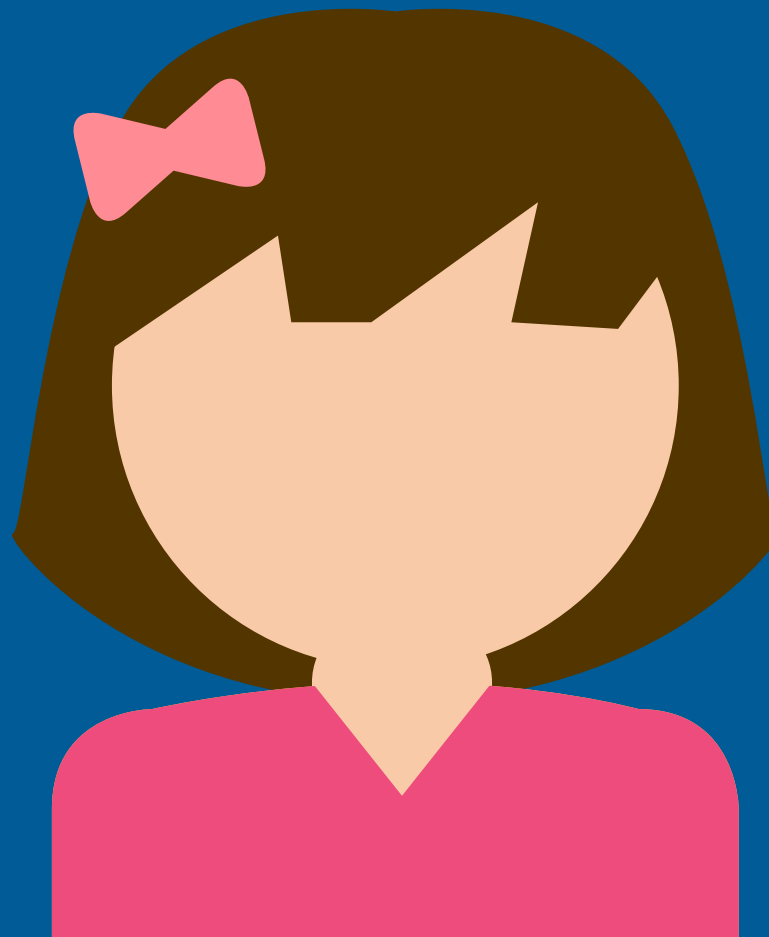
We are excited to give you a glimpse of how we have enhanced the way our students will learn from home in exciting new ways for SY 2021-2022!



AC ABL e C  NNECT T

TABLE OF CONTENTS

AC ABLe CONNECT	5
WHAT IS THE AC ONLINE LEARNING FRAMEWORK?	10
IMPORTANT TERMS YOU NEED TO KNOW	13
The AC ABLe CONNECT LEARNING EXPERIENCE	
• What platforms will the school use to deliver instruction?	14
• What will online learning look like for Preschool?	14
• How will you develop my daughter's literacy and numeracy skills?	15
• How much time will my daughter spend online?	16
• Sample Schedule	17
• What if my daughter can't attend live classes?	18
• What materials will the school provide us with?	18
• Will there be opportunities for my daughter to virtually interact with her classmates?	19
• What is the difference between AC ABLe CONNECT and Home Schooling?	20
• What will our role be as parents of young online learner?	21
• What equipment will we need?	22
• Will classes be the same size as before?	23
• Will there still be morning and afternoon sessions?	23
AC ABLe CONNECT IN THE STUDENT LIFE	
• When will the students go back to school? How will their safety be ensured? What if we don't want our daughter to go to school physically yet?	24
• What will Character Formation look like online?	24
• Will there be activities for Spiritual Formation?	25
• Will Guidance Mentors still be available during online learning?	25
• Will there be opportunities for students to interact with each other online?	25
• Will my daughter be required to wear her uniform?	25
OTHER MATTERS	
• Will other school offices such as finance, registrar, etc. offer online services?	26
• If I choose to home school or transfer my daughter for a year, can I still enroll her next year?	27
• How can we communicate with the school?	27
BASIC EDUCATION DIVISION ACADEMIC CALENDAR	28



ABILITY-BASED EDUCATION

*Developing LIFE Skills to face an
increasingly uncertain world*

Watch this [VIDEO](#) to learn more about ABL e.



CHARACTER FORMATION

*Developing a STRONG SENSE OF
IDENTITY, COMPASSION,
and RESILIENCE*



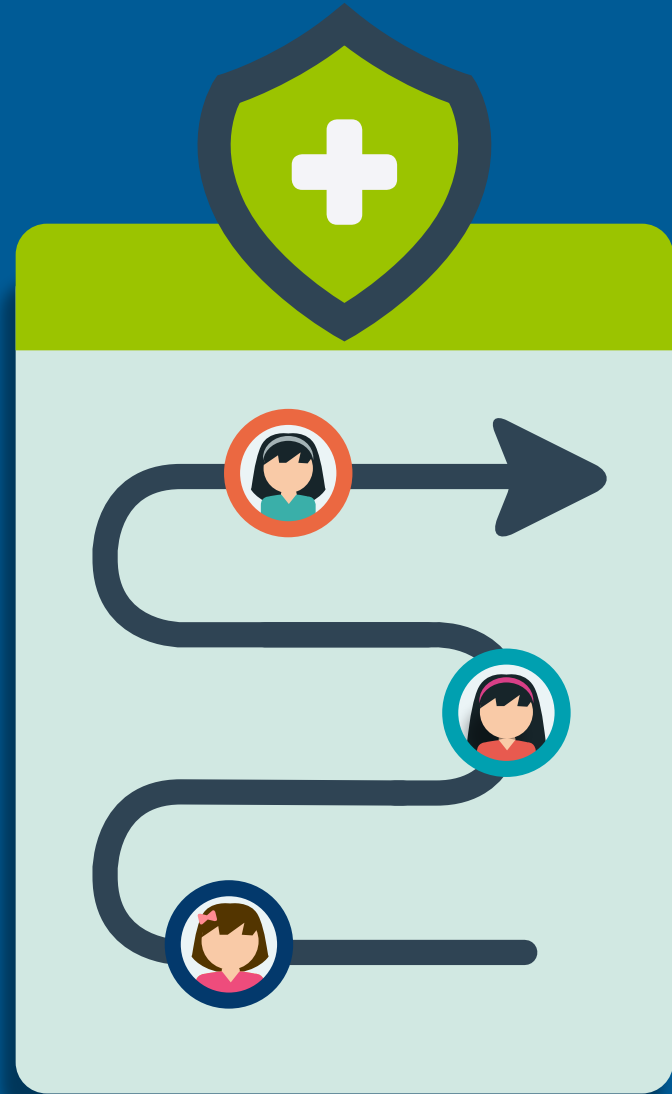
PERSON-ORIENTED ONLINE LEARNING

*Aiming for DEPTH not breadth,
QUALITY not quantity, closely guided by
caring teachers*



STAYING CONNECTED

*Practicing RESPONSIVENESS,
EMPATHY, AND FLEXIBILITY
to meet students' needs*



DYNAMIC AND SAFE LEARNING SPACE

*Loving our times and acting
RESPONSIBLY*

WHAT IS THE AC ONLINE LEARNING FRAMEWORK?

A MODERATED CLASSROOM COMMUNITY



- Daily and weekly classroom schedules to simulate the feel of a class day and facilitate time management and study skills of students
- The subject teacher providing timely direct instruction and being on call during the designated class and consultation periods
- Grade Level Leads and Class Advisers monitoring schedules and attending to student concerns

A ROBUST TEACHING-LEARNING AND COMMUNICATION PLATFORM



- Enabling students to be active participants in their learning, making it easy for them to interact and engage in discussions
- Facilitating communication with students and parents, and ease of monitoring progress
- Making it easy for students to follow the flow of the activities of each lesson and ask for the teacher's help

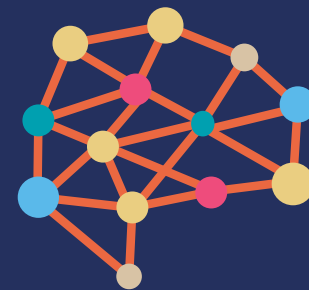
ABILITY-BASED LEARNING (*ABLe*) ONLINE MODULES

FEATURES:



AIMING FOR MASTERY OF KNOWLEDGE & SKILLS

- Chunking of information into easily-digestible bits followed by opportunities for student practice
- Scaffolding learning for student readiness



DEEPER UNDERSTANDING OF CONCEPTS

- Creating opportunities for students to think actively and uncover complexity
- Making time for reflection on personal, interdisciplinary, and real-world connections



INTERACTIVE LEARNING

- Allowing students to inquire and explore together
- Creating student choice and voice



LEARNING BY “DOING” AND “MAKING”

- Creating opportunities for students to learn critical and creative thinking in real-world and community-based problems and situations
- Ensuring a system for timely feedback with the teacher as coach, so that students know how they are doing

IMPORTANT TERMS YOU NEED TO KNOW

ONLINE LEARNING

- teachers and students are in different locations
- conducted via the internet
- methods of delivery may employ different technologies such as learning management systems, applications and video conferencing software

BLENDED LEARNING

- "any formal education program where a student learns online at least some of the time" (retrieved from <https://news.elearninginside.com/what-parents-need-to-know-about-blended-learning/>)
- this means that students may do some of their learning online from home, and some of their learning on campus together with other students and a teacher.

FACE-TO-FACE LEARNING

- involves regular in-person meetings between teachers and students for the delivery of course content and learning materials

LEARNING MANAGEMENT SYSTEM (LMS)

- software that enables schools to communicate with stakeholders (students, parents, teachers and administration), create and manage lessons, deliver instructional materials, administer assessments and monitor student progress

LEARNING PLATFORM

- an integrated set of interactive online services that provides the teachers, learners, parents and others involved in education with information, tools and resources to support and enhance educational delivery and management.

SYNCHRONOUS LEARNING

- "refers to a form of education, learning or instruction in which the student learns from the instructor in real time but not necessarily in person or in the same place" (retrieved from <https://www.techopedia.com/definition/23794/synchronous-learning>)

ASYNCHRONOUS LEARNING

- "a student-centered teaching technique in which online learning resources are used to enable information sharing between people in a network. In asynchronous learning, information sharing is not limited by place or time" (retrieved from <https://www.techopedia.com/definition/23154/asynchronous-learning>)

THE AC ABLe CONNECT

LEARNING EXPERIENCE

WHAT PLATFORM WILL YOU USE TO DELIVER INSTRUCTION?

Each class will have a dedicated **Google Classroom** and **Seesaw** where they can access announcements and materials.

WHAT WILL ONLINE LEARNING LOOK LIKE FOR PRESCHOOL?

The Preschool curriculum will focus on school readiness with an emphasis on **character formation, literacy and numeracy, and play**. A combination of **synchronous** and **asynchronous** methods will be used for instruction.

Each day will consist of:

MORNING MEETING/ASSEMBLY

- Each day will begin with Morning Meeting which includes prayer, check-in, Circle Time.
- Students will have the option to join this session live, or to view a video
- Every Friday, we will have a live Morning Assembly with a bigger group and more teachers.

CHOICE TIME

- Students will be given asynchronous work time where they are free to select from several Choice Time activities prepared by their teachers.
- Choice Time activities are simple, fun, play-based, experiential tasks that target particular abilities and are aligned with topics being learned. Activities will cover literacy, numeracy, Filipino, art, and science.

CLASS ENCOUNTER

- These creative and interactive teacher-led sessions will introduce concepts in Reading, Math, Filipino (Alpabasa), CLE, and Music & Movement
- There will be 30 minute live sessions for Reading once a week and Math twice a week
- There will be 30 minute live or recorded sessions for Filipino, CLE, and Music and Movement once each week

INTERACTIVE READ ALOUDS

- Interactive read alouds go hand in hand with Reading and Filipino class encounters, and are designed to strategically target various comprehension skills
- These sessions may be live or recorded
- Read-alouds may be done in English or Filipino

**please see below for more detailed information on read-alouds*

STRUCTURED PLAY TIME

This consists of movement activities or structured and imaginative play activities done live, via video recording, or with written guidelines

COACHING TIME

A special time after class to give students more reinforcement and guidance.

HOW WILL YOU DEVELOP MY DAUGHTER'S LITERACY AND NUMERACY SKILLS?

Teachers will use a variety of methods to ensure that students' literacy and numeracy skills are developed.

- Teachers will have **live classes** for Reading and Math where they give focused attention to small groups of students.
- **Choice time** will include activities geared towards developing both literacy and numeracy skills.
- There will be live or recorded **Read Alouds** each day which may be done in English or Filipino. These deceptively simple sessions are much more than the teacher reading a story out loud. Each read-aloud is actually meticulously planned, with the teacher asking **well-crafted, strategically placed questions that target specific literacy skills** such as making predictions and inferences, building vocabulary, summarizing, and others. Our Preschool Team Leader Sheryll Anonuevo received training on read-alouds in Columbia Univ., NY, and echoed her learnings to all Preschool teachers.

- There will be weekly **Alpabasa** sessions to build students' literacy skills in Filipino. The Alpabasa Reading Program is a play-based, child-centered reading program, designed by Early Learning expert Tisha Cruz to make reading and writing in Filipino fun and easy. You may learn more about this program at their [website](#).
- In Math, we will design **written and hands-on activities** to help students to help them **make meaning of numbers concepts, shapes, patterns, and time**. We also begin to **introduce basic Singapore Math concepts** such as number bonds.

During the school year, we will also provide **parents** with materials to help you **understand how children learn to read and understand numbers**, and how the various materials we are using target particular literacy and numeracy skills.

HOW MUCH TIME WILL MY DAUGHTER SPEND ONLINE?

Students will spend roughly one hour daily in a live session for Morning Meeting and Class encounter.

For the rest of the school day, we will provide various videos and printed materials for the students to view or accomplish. A suggested daily schedule will be provided, but students and parents may work at their own pace.

SAMPLE SCHEDULE

(Please note that this is subject to minor changes)

Group 1

TIME	MON	TUE	WED	THURS	FRI
9:00-9:30	Morning Meeting (live)	Morning Meeting (live)	Worship Wellness Wednesday	Morning Meeting (live)	Preschool Assembly (live)
9:30-10:00	Reading (live)	MATH (live)	9:00-10:00 Pre-K live)	MATH (live)	ALPABASA (live)
10:00-10:30	Snacks and Free play	Snacks and Free play	Snacks and Free play	Snacks and Free play	Snacks and Free play
10:30-11:00	Choice Time	Choice Time	Worship Wellness Wednesday	Choice Time	Choice Time
11:00-11:30	Structured Play	Structured Play	10:30-11:30 Kinder (live)	Structured Play	Structured Play
11:30-12:00	Read Aloud	Read Aloud	Read Aloud	Read Aloud	Read Aloud

1:00pm - 1:45pm Mon, Tue, and Thurs: CoachingTime
Teachers will be online to help the kids with their work after class. Just log in if you wish.

Group 2

TIME	MON	TUE	WED	THURS	FRI
9:00-9:30	Morning Meeting (live)	Morning Meeting (live)	Worship Wellness Wednesday	Morning Meeting (live)	Preschool Assembly (live)
9:30-10:00	Choice Time	Choice Time	9:00-10:00 Pre-K live)	Choice Time	ALPABASA (live)
10:00-10:30	Snacks and Free play	Snacks and Free play	Snacks and Free play	Snacks and Free play	Snacks and Free play
10:30-11:00	Reading (live)	MATH (live)	Worship Wellness Wednesday	MATH (live)	Choice Time
11:00-11:30	Structured Play	Structured Play	10:30-11:30 Kinder (live)	Structured Play	Structured Play
11:30-12:00	Read Aloud	Read Aloud	Read Aloud	Read Aloud	Read Aloud

1:00pm - 1:45pm Mon, Tue, and Thurs: CoachingTime
Teachers will be online to help the kids with their work after class. Just log in if you wish.

WHAT IF MY DAUGHTER CAN'T ATTEND LIVE CLASSES?

We understand that students may not always be able to attend their live classes. In such instances, **accommodations** will be made so that they can keep up with their lessons at their own pace. For example, recordings of live classes may be made available to her.

WHAT MATERIALS WILL THE SCHOOL PROVIDE US WITH?

Every month, we will provide **Learning Bundles** containing an engaging set of materials **specifically designed to develop the target skills** in each subject for each week. These materials **may be printed at home**, or **hard copies may be picked up** from school. Parents may arrange for a courier service to collect the materials if they wish.

Teachers will also create **materials that can be answered online** using Seesaw. We will also regularly provide **videos** for students to view.

WILL THERE BE OPPORTUNITIES FOR MY DAUGHTER TO VIRTUALLY INTERACT WITH HER CLASSMATES?

AC ABLe CONNECT gives importance to “Allowing students to **inquire and explore together**.” Thus, synchronous activities will provide opportunities for students to interact with each other and learn collaboratively.

WHAT SUPPORT WILL THE SCHOOL PROVIDE FOR US AND OUR DAUGHTER/S AS WE NAVIGATE THIS NEW WORLD OF ONLINE LEARNING?

- An **orientation** will be given to **parents and other caregivers** at the beginning of the year. This will cover topics such as: routines and guidelines for meeting online, tips for establishing a routine at home, setting consultations with the teachers, and others.
- Just as we would with face-to-face learning, we will spend time **helping your daughters become accustomed to the online learning environment**.
- **Tutorial videos** on topics such as navigating Google Classroom and uploading work will be available throughout the year.
- Our **Helpdesk** will be on call during office hours to provide you with assistance.

WHAT IS THE DIFFERENCE BETWEEN AC ABLe CONNECT AND HOMESCHOOLING?

After considering student, parent, and teacher feedback about 2019-2020's Learning from Home system, we have made major enhancements to our delivery of online learning. A key feature of AC ABLe CONNECT is a more **active and robust live teacher presence**. Aside from daily **live instruction**, teachers will provide a range of **pre-recorded videos and screencasts** and/or **printed materials** for all subjects to ensure that students can learn all of their lessons at their own pace. We will have **tech practice sessions** at the start of the year **with students, parents, and other caregivers** so that all may become accustomed to navigating the online space. The Preschool Team Leader, Homeroom teachers, and Guidance Mentor will also be available for consultation regarding your child/ren's development.

This is in contrast to homeschooling which requires that **the parent takes primary responsibility** for their child's learning. This means that parents will be the ones to look for and implement a developmentally-appropriate, DepEd-compliant curriculum, select instructional materials, design lessons, deliver instruction, monitor student progress and behavior, give feedback regarding academic performance and administer assessments among other tasks.

WHAT WILL OUR ROLE BE AS PARENTS OF A YOUNG ONLINE LEARNER?

- Be a **reassuring presence** for your child/ren, and **collaborative and supportive partners of the school**.
- **Stay informed** by checking the Google Classroom and emails for updates and messages each morning of the school week. We recommend that you set a time to check the Google Classroom and emails for updates and messages each morning of the school week. Announcements, if any, will be sent by 8am daily.
- **Stay in communication** with the school to give feedback, ask questions, and relay concerns.
- **Designate a learning space** for your child/ren which will serve as her/their "little school/classroom" at home for different kinds of work like hands-on activities, computer-based activity, movement activity, art, writing, quiet reading, etc. We will provide detailed **tips** for setting up this space before the school year begins.
- **Establish and maintain a daily routine and schedule** for your child/ren by trying to follow the activities and pace recommended by the school for the day. We will also provide tips for this towards the start of the year.
- **Help your child/ren accomplish the various simple tasks** that will be assigned each day. If they are finding a particular topic challenging, contact the teacher to let her know that your child needs additional support.
- Keenly **monitor and supervise screen time** for your daughter/s children. A maximum of 2 hours a day for school work (online meet and/or video viewing) is recommended. The rest of the school day should be used for doing hands-on activities, movement and playtime.

We will provide more detailed tips during the **Parent Orientations** at the start of the year.

WHAT EQUIPMENT WILL WE NEED?

To maximize the online learning experience, it would be ideal for each student to have a **computer** (laptop/desktop) or **tablet** with camera and **internet access**.

The minimum computer specifications required to run the AC ABLe CONNECT platform and apps are:

- i5, i7 or a9 processor (i3 processors may also be used but may run more slowly)
- 8 gb RAM
- 64-bit BUS (Windows)
- 512 gb (Windows) or 128 SSD (Mac) hard drive
- webcam

The minimum tablet specifications required to run the AC ABLe CONNECT platform and apps are:

- ver 6.0 or higher (Android) or ios 11.0 or higher (Mac)
- 1.8 ghz or higher
- 3 gb RAM
- 128 mb memory minimum (please note that this memory capacity will likely require a dongle to transfer files)
- wifi access
- webcam

However, **special arrangements** may be made for students who are sharing devices with family members, whose computers do not meet these specifications, who have an unstable/weak internet connection at home, etc. **There is no need to buy a new computer or laptop.**

WILL CLASSES BE THE SAME SIZE AS BEFORE?

Preschool class sizes will remain the same because these levels have always had a much smaller student-teacher ratio than the higher grades. However, sections will be further subdivided during live classes to provide students with more focused attention.

WILL THERE STILL BE MORNING AND AFTERNOON SESSIONS?

All live sessions will be held in the **morning**. The recommended schedule is for the morning, but asynchronous activities may be spread throughout the day at the child and/or the parent/caregiver's **own pace**.

A C A B L e C O N N E C T

I N S T U D E N T L I F E

WHEN WILL THE STUDENTS GO BACK TO SCHOOL? HOW WILL THEIR SAFETY BE ENSURED? WHAT IF WE DON'T WANT OUR DAUGHTER TO GO TO SCHOOL PHYSICALLY YET?

For school year 2021-2022, we plan to **continue online learning**.

We continue to monitor the national and global situation. When the government and health experts allow, the school may begin providing opportunities for interaction and/or learning activities on campus. In such scenario, we will follow stringent health protocols and strict social distancing guidelines. **Attendance in such on-campus activities will be optional.**

*WHAT WILL CHARACTER FORMATION
LOOK LIKE ONLINE?*

Teachers will continue lovingly attending to character formation, focusing on helping students **understand themselves and their feelings**. We will also encourage students to begin to **reach out** beyond themselves to their peers, teachers, and families, whether online or when face-to-face. Furthermore, we will teach students to be **respectful and kind digital citizens** who use polite words when they speak and who listen to each other.

WILL THERE STILL BE ACTIVITIES FOR SPIRITUAL FORMATION?

Spiritual formation is one of the three pillars of Assumption education and therefore a non-negotiable feature of school life. Aside from the **daily prayer** at Morning Meeting, we will continue having other online **paraliturgical celebrations and observances**.

WILL GUIDANCE MENTORS STILL BE AVAILABLE DURING ONLINE LEARNING?

The Preschool Guidance Mentor (GM) will play a **proactive role** in caring for the students, especially their mental health and wellbeing. Under AC ABLe CONNECT, our **virtual guidance program** will continue to provide the following in the Preschool:

- Consultation Services (OCS) for individuals and groups
- Routine interview and follow up
- Special guidance activities

WILL THERE BE OPPORTUNITIES FOR STUDENTS TO INTERACT WITH EACH OTHER ONLINE?

"Staying Connected" is a central feature of AC ABLe CONNECT. Thus, we have ensured that live classes and assemblies will provide opportunities for students to interact with each other, build relationships, and learn collaboratively.

WILL MY DAUGHTER BE REQUIRED TO WEAR HER UNIFORM?

A **dress code** will be provided for students. **Wearing the school uniform will be optional** because not all students may have uniforms for school year 2020-2021.

FREQUENTLY ASKED QUESTIONS

WHEN WILL WE GO BACK TO FACE-TO-FACE LEARNING? HOW WILL THEIR SAFETY BE ENSURED?

For school year 2021-2022, we plan to continue **online learning**.

We continue to monitor the national and global situation. When government and health experts allow, the school may begin providing opportunities for interaction and/or learning activities on campus. In such a scenario, we will follow stringent health protocols and strict social distancing guidelines. Attendance in such on-campus activities will be optional.

WILL MY DAUGHTER BE REQUIRED TO WEAR HER UNIFORM?

A **dress code** will be provided for students. **Wearing the school uniform will be optional** because not all students may have uniforms for school year 2021-2022.

Below are specific guidelines for the Dress Code:

- any sleeved shirt or blouse with minimal design paired with a decent bottom such as jogging/jogger pants, leggings, jeans and shorts or skirt (hemline no higher than 3 inches above the knee)
- sleeved casual dress (hemline no higher than 3 inches above the knee)
- sleeveless tops or dresses may be worn (shoulder straps must be at least two inches across, there must be no exposed undergarments and plunging neckline)
- for PE uniform, any t-shirt paired with any jogging pants, socks and appropriate shoes

HOW CAN WE COMMUNICATE WITH THE SCHOOL?

AC BED Hotline (09167849018) or at the BED Helpdesk at **acbedhelpdesk@assumption.edu.ph**

ESCALATION P R O T O C O L

To ensure that your concerns are attended to in a timely manner by the proper authorities, please be reminded about our Escalation Protocol.



ACADEMIC CONCERNS

1. You may send an email with the subject line: <indicate subject> <grade and section> to:
 - a. Preschool: preschoolacademics@assumption.edu.ph
 - b. Grades 1- 10: p10academics@assumption.edu.ph
 - c. Grades 11 - 12: shsacademicteam@assumption.edu.ph

We will communicate with you within two (2) working days upon receiving your email.

2. If unresolved, you may send an email to set an appointment with the Team Leader (P-10) or the Senior High School Chairperson/Officer-in-Charge.

P-10 Subject Team Leaders

Preschool TL: preschoolacademics@assumption.edu.ph
CLE TL: cletl@assumption.edu.ph
Filipino TL: filipinotl@assumption.edu.ph
English TL: englishtl@assumption.edu.ph
Mathematics TL: mathematicstl@assumption.edu.ph
Science TL: sciencetl@assumption.edu.ph
Social Studies TL: socialstudiesl@assumption.edu.ph

Physical Education & Health TL: pehtl@assumption.edu.ph
Music and Art TL: musicandarttl@assumption.edu.ph
T.L.E. Team Leader: tletl@assumption.edu.ph

Senior High School Strand Chairpersons:

HUMMS Chairperson: shshumss@assumption.edu.ph
ABM Chairperson: shsabm@assumption.edu.ph
Core Subjects Chairperson: shscore@assumption.edu.ph
STEM Chairpersons: shstemscience@assumption.edu.ph
: shstemmath@assumption.edu.ph
A&D Chairperson: shsad@assumption.edu.ph

3. If unresolved, you may send an email to: the Director for Academic Affairs (Preschool to Gr. 10) at beddaa@assumption.edu.ph or the Director for Senior High School (Gr. 11-12) at beddshs@assumption.edu.ph, as the case may be. The Director is expected to respond within a week from receipt of your letter. She may set a Parent-Teacher Conference with you or get in touch with you through a phone call.
4. If unresolved, you may send an email addressed to the Principal at bedprincipal@assumption.edu.ph.

As we navigate through these exciting yet uncharted times, we continue to recognize that school and home partnership is critical in creating a safe and nurturing environment for the child. We encourage the AC community formators (parents, teachers and staff) to keep communication lines open. Together, we will accompany your daughters in this new set-up. You may get in touch with us through the various platforms we have made available to you.



PERSONAL/SOCIAL CONCERNS

1. You may send an email to your daughter's Class Adviser with the subject line: <indicate subject> <grade and section> to:
 - a. G1: gs1@assumption.edu.ph
 - b. G2: gs2@assumption.edu.ph
 - c. G3: gs3@assumption.edu.ph
 - d. G4: gs4@assumption.edu.ph
 - e. G5: gs5@assumption.edu.ph
 - f. G6: gs6@assumption.edu.ph
 - g. G7: jhs7@assumption.edu.ph
 - h. G8: jhs8@assumption.edu.ph
 - i. G9: jhs9@assumption.edu.ph
 - j. G10: jhs10@assumption.edu.ph
 - k. G11: shs11@assumption.edu.ph
 - l. G12: shs12@assumption.edu.ph

We will communicate with you within two (2) working days upon receipt of your letter.

2. If the Class Adviser is unable to address your concern, you may send an email to set an appointment with your daughter's Cluster Lead (CL). The CL

will then schedule a Parent-Teacher Conference.

- a. G1 and 2: cl1and2@assumption.edu.ph
- b. G3 and 4: cl3and4@assumption.edu.ph
- c. G5 and 6: cl5and6@assumption.edu.ph
- d. G7 and 8: cl7and8@assumption.edu.ph
- e. G9 and 10: cl9and10@assumption.edu.ph
- f. G11 and 12: clshs@assumption.edu.ph

The CL will communicate with you within two (2) working days upon receipt of your letter.

3. If unresolved, you may send an email addressed to the Director for Student Affairs (DSA) at acbed.osa@assumption.edu.ph. The Director is expected to respond within a week from receipt of your letter. She may set a Parent-Teacher with you or call you on the phone.
4. If unresolved, you may send an email addressed to the Principal at bedprincipal@assumption.edu.ph



TEACHER GUIDELINES FOR COMMUNICATING WITH PARENTS

1. Teachers/ Staff will respond within 2 working days. For matters that need more time to investigate, kindly give them ample time to give you an update.
2. Teachers/Staff will be respectful and polite.



PARENT GUIDELINES FOR COMMUNICATING WITH TEACHERS

1. Be respectful and polite.
2. Give ample time for teachers to respond.

BASIC EDUCATION DIVISION ACADEMIC CALENDAR

School Year 2021-2022

**Dates are subject to change due to some considerations. Changes in schedule will be disseminated through official school channels.*

Opening of Classes	SHS: August 3, 2021 Grades 1-10: August 9 Preschool: Aug 11
Brain Breaks	PS-Gr.12: October 8-11
Start of Christmas Break	SHS: December 18 Grades 1-10: December 16 Preschool: December 16
Resumption of Classes	PS-Gr.12: January 4, 2022
PAASCU Level III Re-accreditation schedule	March 3-4
Brain Breaks	PS - SHS: March 7-8
End of Classes SY 2021-2022	SHS: May 13 Gr. 1-10: May 11 Preschool: May 11
Graduation & Moving Up, Batch 2022	Grade 12: June 9 Grade 6: May 27 Grade 10 Moving Up: May 23 Preschool Thanksgiving Day: May 11



@assumptionsanlorenzo 

@assumptionsanlorenzo 

@Acbed_sanlo 